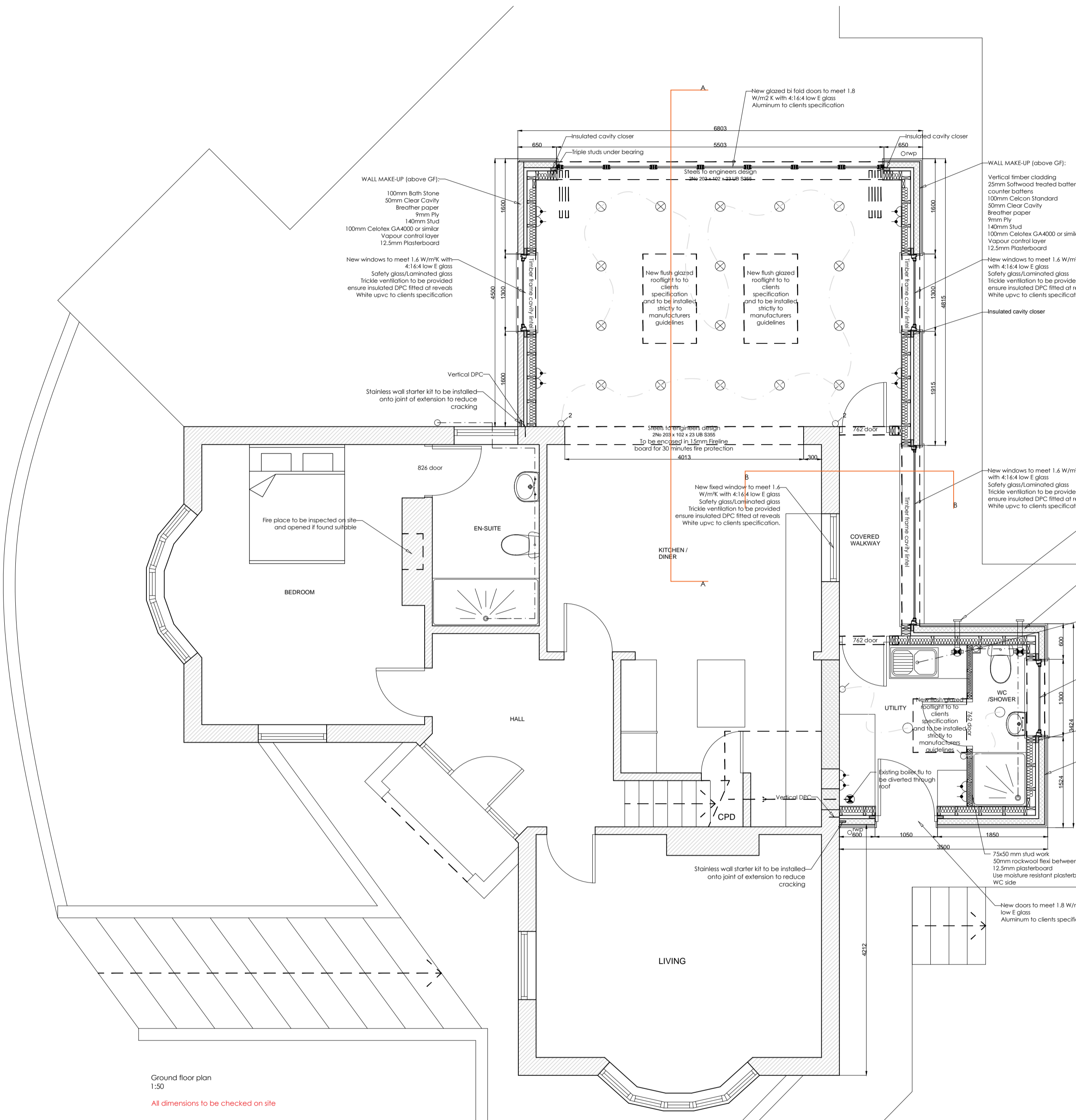


All drawings subject to Building Control approval.
To be plan checked

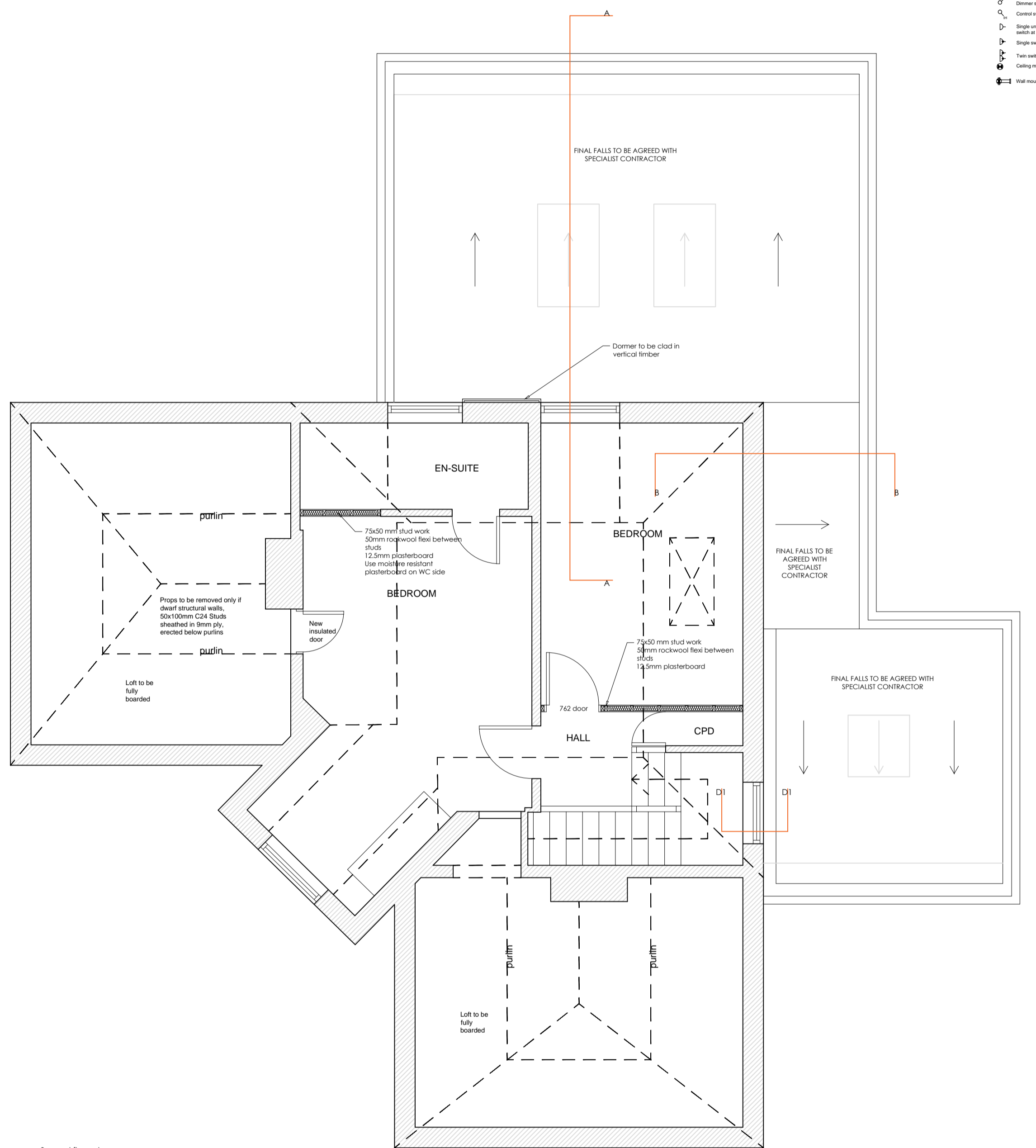


Ground floor plan
1:50
All dimensions to be checked on site

section of drive leveled

SAFETY NOTES:

- EXCAVATIONS IN EXCESS OF 1.2 m DEEP TO HAVE EITHER
 - sloping battered sides not greater than the natural angle of repose on soils.
 - benching in 1m increments
 - adequately designed temporary works, shoring and shuffling
- ALL OPEN EXCAVATIONS TO HAVE ADEQUATE EDGE PROTECTION
- EXCAVATED MATERIAL TO BE STOCKPILED AT A SUITABLE DISTANCE FROM EDGE OF EXCAVATION TO PREVENT SURCHARGE ON SOIL AND LIMIT THE POSSIBILITY OF COLLAPSE OF THE EXCAVATION FACES.
- ADEQUATE SAFE ACCESS AND EGRESS TO AND FROM EXCAVATIONS TO BE PROVIDED
- ENSURE ADEQUATE SUPERVISION OF SITE PLANT AND PROVIDE COMPETENT BANKSMAN
- PROVIDE ADEQUATE EQUIPMENT TO ENSURE THAT EXCAVATIONS ARE MAINTAINED FREE OF WATER.
- PROVIDE SUITABLE PROTECTION AND MAKE PROVISION FOR ADEQUATE SITE TRAFFIC MANAGEMENT AND ACCESS ONTO MAIN HIGHWAYS
- ENSURE THAT THE SITE AND WORKPLACE IS SECURED AT ALL TIMES AND THAT ACCESS TO THE SITE IS FOR AUTHORISED PERSONNEL ONLY
- ENSURE THAT ALL WORKING HEIGHT RESTRICTIONS IN VICINITY OF ANY OVERHEAD SERVICES ARE COMPLIED WITH
- ENSURE THAT WHERE APPLICABLE ALL PPE IS USED
- ENSURE THAT WORKING SAFELY FROM HEIGHT GUIDELINES ARE FOLLOWED
- SAFETY DESIGN CONSIDERATIONS:
 - SELF-CLEANING GLASS AND POWDER-COATED ALUMINUM FRAMES TO BE USED ON SKYLIGHT TO REDUCE MAINTENANCE
 - THROUGH-COLOURED SOFFITS AND FASCIAS TO BE USED TO REDUCE MAINTENANCE
 - SAFETY GLASS TO BE USED IN ALL LOW LEVEL WINDOWS/DOORS



Second floor plan
1:50
All dimensions to be checked on site

Note: All steels covered with two layers of 12.5mm plasterboard to give 30 minutes fire protection.

Note: This drawing is to be read in accordance with approved planning and level drawings, care must be taken to ensure that any other expert advice from structural engineer etc is read in conjunction with this drawing.

Note: Cavity fire stops to be installed to meet part B

Note: Ensure all blockwork returns have an insulated DPC

Note: care must be taken to ensure that any other expert advice from structural engineer etc is read in conjunction with this drawing.

NOTE: Drainage to be assessed prior to starting of works. Existing foul and storm drainage to be protected in accordance with Wessex Water requirements, or the local water regulatory body.

All foul drainage to connect to existing provision with suitable rodding eye outside of extension.

All drawings subject to Building Control approval.
To be plan checked

Symbol	Description
Light fixture	Light fixture
Electric shower unit	Electric shower unit
Electric meter box	Electric meter box
Consumer unit	Consumer unit
Low energy light fitting - indicated compact fluorescent lamp with 2-pin or 4-pin base	Low energy light fitting - indicated compact fluorescent lamp with 2-pin or 4-pin base
Pendant light	Pendant light
Light on battery holder fitting	Light on battery holder fitting
Heat exchanger	Heat exchanger
Fluorescent light	Fluorescent light
External light fitting	External light fitting
Wall light	Wall light
Insulated Low Energy Fluorescent Down Light	Insulated Low Energy Fluorescent Down Light
1 gang 1 way switch (S)	1 gang 1 way switch (S)
2 gang 1 way switch (S)	2 gang 1 way switch (S)
Full switch	Full switch
Dimmer switch	Dimmer switch
Control switch for motion sensor	Control switch for motion sensor
Single unswitched socket outlet 13A with earth at working level	Single unswitched socket outlet 13A with earth at working level
Single switched socket outlet 13A	Single switched socket outlet 13A
Two switched socket outlet	Two switched socket outlet
Unswitched socket outlet	Unswitched socket outlet
Wired mounted external fan	Wired mounted external fan
65A consumer unit	65A consumer unit
Backed up	Backed up
Panel door	Panel door
Panel holder for external fan - 130mm x 130mm	Panel holder for external fan - 130mm x 130mm
3 ring unswitched connector for boiler	3 ring unswitched connector for boiler
Boiler for future cable television supply	Boiler for future cable television supply
FRS	FRS
Door for future cable television supply	Door for future cable television supply
TV aerial	TV aerial
Double TV point	Double TV point
130mm x 130mm x 25mm profile of profile kept at the top and bottom of high level	130mm x 130mm x 25mm profile of profile kept at the top and bottom of high level
Telephone point	Telephone point
Two telephone points	Two telephone points
Thermistor for panel heating	Thermistor for panel heating
Door set	Door set
Double connection point	Double connection point
Smoke detector	Smoke detector
Heat detector	Heat detector
Carbon monoxide detector	Carbon monoxide detector
Door bell push	Door bell push
Door bell receiver	Door bell receiver
Waste outlet	Waste outlet
Fixture shower into drainage outlet	Fixture shower into drainage outlet
Radiator zone	Radiator zone
Gas safety point for future use	Gas safety point for future use
Sublimator	Sublimator
Inversion float	Inversion float
Alarm contacts	Alarm contacts
Alarm sensor	Alarm sensor
5 amp light socket	5 amp light socket
Alarm point	Alarm point
Two switched socket outlet	Two switched socket outlet
Three socket	Three socket
Electric heater meter	Electric heater meter
Escape route	Escape route



Chartered Institute of Architectural Technicians
Registered Practice
Partly AIA ETC Act 1996
The work indicated on these drawings may be within the provisions of the Act. It is the building owner's responsibility to assess the requisite notices to adjoining owners and otherwise comply with the Act.

Responsibility is not accepted for errors made by anyone using these drawings, all discrepancies should be reported to Western Building Consultants.
Copyright 2014 Western Building Consultants. This document and the design are the copyright of Western Building Consultants. This drawing is not to be used or copied without written authorized consent.



Drawings:
General Arrangement Plans

Project:
227 Bloomfield Road
Bath
BA2 2AY

Scale: 1:20 @ A1 Job No: 16/195
www.westernbuildingconsultants.co.uk
Drawn by: JHB Date: 20/12/2016



Western House
2 Rye Hill, Bath
BA2 2QH
01225 789 307
www.westernbuildingconsultants.co.uk
Drawing Number: BBD01 Revision: 1